



# 6.5t GVW MANUAL TRANSMISSION 4X4 2014 MODEL YEAR

**CANTER**



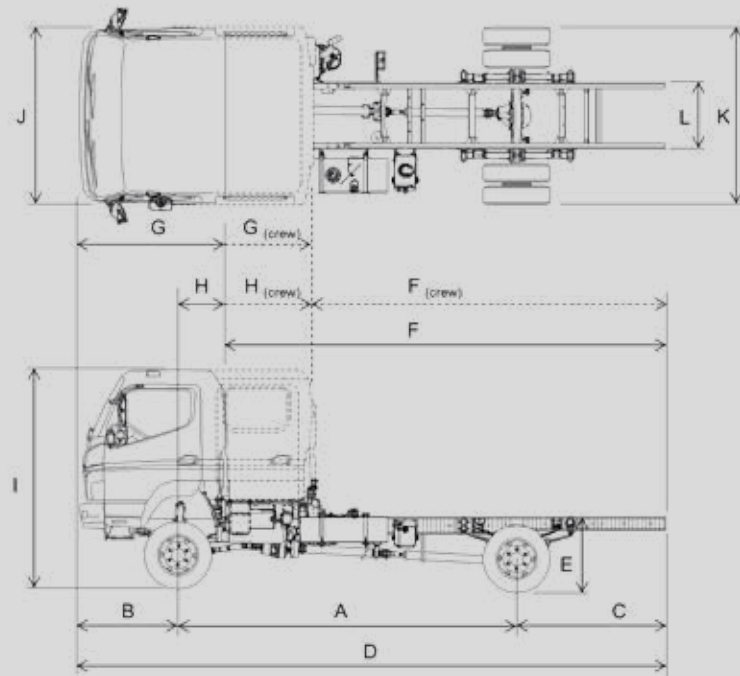
Exclusively from Mercedes-Benz

## 2014 MODEL YEAR

### Manual transmission

6.5t GVW

4x4



## DIMENSIONS

		6C18 Single Cab, 3 seats	6C18 Crew Cab, 7 seats
A. Wheelbase	mm	3415	3865
B. Front Overhang	mm	1125	1125
C. Rear Overhang	mm	1395	1395
D. Overall Length	mm	5935	6685
E. Chassis Height (Chassis-Cab unladen)	mm	870	870
F. Back of Cab to End of Frame	mm	4270	5020
G. Bumper to Back of Cab	mm	1665	1665
H. Front Axle to Back of Cab	mm	540	540
I. Overall Height (Chassis-Cab unladen)	mm	2470	2470
J. Cab Width (excluding mirrors)	mm	1995	1995
K. Rear Axle Width (to tyre wall)	mm	2027	2027
L. Frame Width	mm	752	752
Cab to Body Gap (minimum)	mm	100	100
Maximum Possible Body Length	mm	5005	5750
Maximum Possible Body Width	mm	2550	2550
Turning Circle (4x4 engaged - kerb to kerb)	m	13.6	15.2
Turning Circle (4x4 engaged - wall to wall)	m	14.9	16.5
Turning Circle (4x4 disengaged - kerb to kerb)	m	12.4	14.0
Turning Circle (4x4 disengaged - wall to wall)	m	13.8	15.2

## WEIGHTS

		6C18 Single Cab, 3 seats	6C18 Crew Cab, 7 seats
Chassis-Cab Weight Total	kg	2670	2700
Chassis-Cab Weight Front Axle	kg	1790	1810
Chassis-Cab Weight Rear Axle	kg	880	890
Front Axle Capacity	kg	2800	2800
Rear Axle Capacity	kg	6000	6000
Maximum Gross Vehicle Weight (GVW)	kg	6500	6500
Maximum Gross Train Weight (GTW)	kg	10000	10000
Body and Payload Allowance	kg	3830	3800

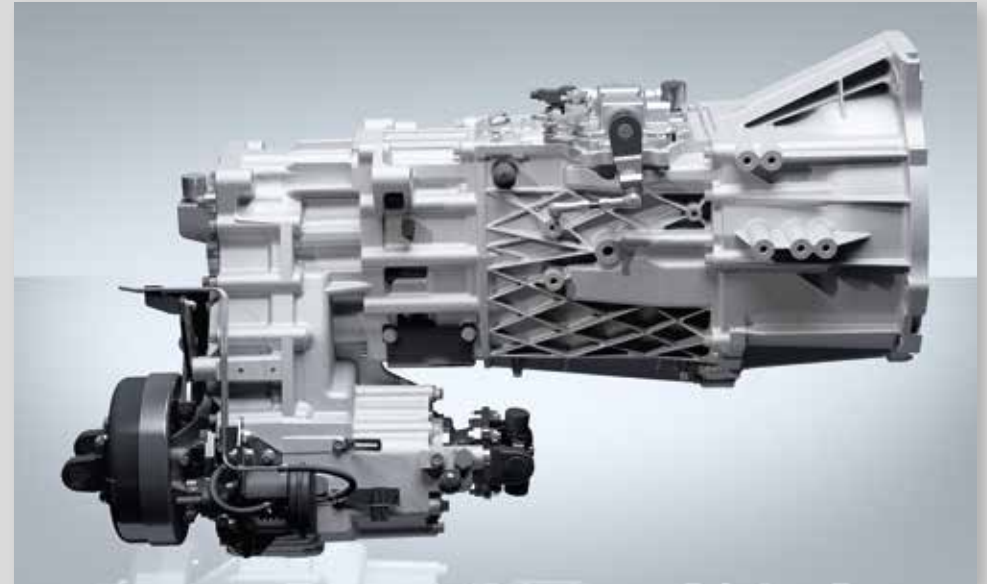
Dimensions and Weights are for guidance only – for Body-Building calculations refer to the Canter Body/Equipment directives available from the FUSO Body-Builder portal  
 Manufacturing tolerance for Chassis Height and Overall Height is  $\pm 25$ mm  
 Manufacturing tolerance for Chassis-Cab Weights is  $\pm 5\%$   
 Chassis-Cab Weights include 20 litres of fuel, 12 litres of AdBlue® and exclude the driver  
 Maximum Possible Body Length dimension is with 65% overhang. Rear overhang must be extended to achieve this. Front Axle loading must be a minimum of 25% of GVW  
 Maximum Possible Body Width dimension is valid only with mirrors set to the 'outside set' position



## ENGINES

		4P10-AAT6
Engine Power / Torque curves		<p>4P10-AAT6 (129 kW (175 PS)) 430 Nm @ 1600 rpm    129 kW @ 3500 rpm</p>
<b>Max. Power output (EEC)</b>	kW	Diesel, 4-stroke, 16-valve, DOHC, VGT Turbo, Intercooled, Common-rail direct-injection
	PS	175
	rpm	3500
<b>Peak Torque (EEC)</b>	Nm	430
	rpm	1600
<b>Type</b>		Diesel, 4-stroke, 16-valve, DOHC, VGT Turbo, Intercooled, Common-rail direct-injection, Piezo Injectors
<b>No. of Cylinders</b>		4
<b>Displacement</b>		2998 cm <sup>3</sup>
<b>Emissions Level</b>		Euro VI (heavy-duty)
<b>Emissions Treatment</b>		EGR + DPF + SCR (BlueTec)
<b>Air Intake Type</b>		High cab mounted Intake, paper element type, restriction indicator
<b>Fuel Type</b>		Diesel (to EN 590 standard)
<b>NOx reduction agent</b>		AdBlue® (to ISO 22241 standard)
<b>Idle start/stop system (ISS)</b>		Standard on all models. Over-ride switch in cab
<b>Alternator</b>		AC 12V 140 Amp

## TRANSMISSION, AXLES, WHEELS AND TYRES



<b>Clutch Designation</b>	C4W30				
<b>Gearbox Designation</b>	M038S5				
<b>Gearbox Description</b>	5-speed manual with dashboard mounted selection lever				
<b>Gear Ratios</b>	1st / Reverse	2nd	3rd	4th	5th
	5.494	3.193	1.689	1.000	0.723
<b>Front Axle</b>	Ratio 4.875:1 with manual locking / freewheeling hubs				
<b>Rear Axle</b>	Ratio 4.875:1 with limited slip differential (multi-disc type)				
<b>Transfer box</b>	Integrated into gearbox with two switchable speed ratios, HI Ratio 1.090:1, LOW ratio 1.987:1 4x2 / 4x4 drive is engaged/disengaged via dashboard mounted switch				
<b>Wheel/Tyre Arrangement</b>	Front axle: Single, Rear axle: Dual				
<b>Wheels</b>	17.5 x 6.00 - 127 - 9t - 6 stud				
<b>Tyres</b>	205 / 75 R 17.5 124 / 122 M				

PERFORMANCE		
<b>Maximum speed - limited</b>	km/h (mph)	90 (56)
<b>Maximum speed - unlimited</b>	km/h (mph)	130 (81)
<b>Maximum gradeability @6.5t</b>	% (theoretical)	39

## CHASSIS

<b>Frame Section</b>	mm	Inside wheelbase: 192 x 60 x 6 (+ reinforcement)
		Rear overhang: 152 x 60 x 6
		Material Yield Strength: 305 MPa
<b>Tank capacity Diesel / AdBlue®</b>	litres	100 / 12
<b>Electrical System / Batteries</b>		12 Volt / 2 x 12 Volt (100AH-760A(EN)) connected in parallel
<b>Body-Builder interfaces</b>		Mounting Brackets Fitted as standard – For positions, see chassis drawings on the FUSO Body-Builder Portal 12V Body-Builder electrical interface: 1 in cab and 1 rear of cab
<b>Trailer Electrics</b>		13 Pin (12V) connector – pre-installed at rear of chassis
<b>Reverse Warning Buzzer</b>		Standard fit without isolation switch (isolation switch can be added by Dealer)



## SUSPENSION, STEERING AND BRAKES

<b>Suspension Front</b>		Semi-elliptic laminated leaf springs with double acting shock absorbers
<b>Suspension Rear</b>		Semi-elliptic laminated leaf springs with double acting shock absorbers
<b>Steering</b>		Power steering with recirculating ball and nut, tilt and telescopic column with steering lock
<b>Braking System</b>	Service	Hydraulic, vacuum assisted, 2 circuit, drum brakes (Ø320mm) with ABS, EBD and over-ride feature
	Parking	Mechanical, internal expanding type mounted on the rear end of the transmission case
	Retarder	Electronically governed exhaust brake – up to 50kW braking power
<b>Ground Clearance under axles F/R</b>	mm	210 / 185
<b>Approach / Departure angle</b>	degrees	35 / 25



## CAB FEATURES



## EXTERIOR

- High strength steel welded cab
- Cab structure reinforced to meet the FUSO RISE (Realised Impact Safety Evolution) requirements
- Internal strength reinforcement beams built into doors
- Wide opening doors with deep side windows for enhanced lateral visibility
- Cathodic dip painted cab structure
- Cab entry / step illumination lamps built into door panel
- Heated foldable multi-adjusting rear-view mirrors
- Manual tilting mechanism for easy access to engine bay (Crew cab does not tilt)
- Single rear facing window in back wall of cab
- Extensive range of colours including Metallic and Pearl options
- 3 piece front bumper

## INTERIOR

- Walk-through access
- 3 seat cab (driver + 2 passengers)
- Driver's suspension seat with adjustable springing rate, lumbar support and arm rest
- Isringhausen cloth seats (leather sides) with headrests
- Split folding passenger seat with access to clipboard and document tray
- Flame resistant interior materials
- 3-point seat belt on driver's seat and outboard passenger seat, lap belt for centre passenger
- Adjustable steering wheel (reach and rake)
- Grab handles
- Vinyl floor covering
- Overhead storage shelves
- Locking glove box
- Storage area between seats
- Storage pocket on rear wall of cab
- Electric driver's side and passenger side windows
- Retractable twin cup holders
- 12V power socket
- Central courtesy light
- Tinted glass

## SECURITY

- Engine Immobiliser
- Keyless remote central locking

## INSTRUMENTS AND CONTROLS

- Multi-function electronic display screen (fuel consumption, trip, DPF status, time, odometer, maintenance info)
- Speedo in mph (and km/h)
- Fuel and AdBlue® gauges
- Rev counter with economy band
- 4x4 engagement switch
- HI / LOW ratio selection switch
- Manual DPF regeneration switch
- Heated mirror switch
- Fog lamp switch
- Electric window switches in door panels
- Wipers and exhaust brake control stalk
- Lighting and Indicator control stalk
- Rotary heater controls
- Steering wheel mounted horn switch
- Interior lamp switch on head lining
- Digital tachograph (2 man)

## CREW CAB FEATURES

- 7 seats (3 front, 4 rear)
- 4 doors
- Central locking on all doors
- Front electric windows / rear manual
- Storage under rear seats
- 3-point seat belts on outboard seats
- Access panels for maintenance

## OPTIONAL EQUIPMENT

- Airbag driver's seat
- Airbag driver and co-driver seat
- Air conditioning
- 24V Body-Builder interface (with 24V 80A Alternator)
- Pre installation for engine driven accessory
- Remote engine speed control for PTO
- PTO (196Nm) with flange
- PTO (196Nm) for direct connected ISO pumps
- Fire extinguisher 2kg (mounted inside cab)
- Spare Wheel/Tyre
- Michelin tyres
- Rear Underrun bar
- Rear Underrun with coupling provision
- Speed Limiter removed (Emergency vehicles only)
- Tachograph removed (out-of-scope vehicles only)
- Radio / CD / MP3 + Bluetooth®

## WARRANTY AND MAINTENANCE

<b>Standard Warranty</b>	3 years / unlimited mileage
<b>Standard Maintenance Intervals</b>	40,000km / 1 year



SYSTEM	APPROVAL LEVEL
<b>EC Type Approval</b>	2007/46*1230/2012
<b>Noise levels</b>	Reg. 51 - 02
<b>Engine power</b>	Reg. 85 - 00
<b>Emissions</b>	595/2009*64/2012A
<b>Fuel tanks</b>	Reg. 34 - 02
<b>Steering</b>	Reg. 79 - 01
<b>Door latches and hinges</b>	130/2012
<b>Vehicle Access</b>	Reg. 11 - 03
<b>Horn</b>	Reg. 28 - 00
<b>Indirect vision (mirrors)</b>	Reg. 46 - 02
<b>Braking</b>	Reg. 13 - 11
<b>EMC</b>	Reg. 10 - 04
<b>Diesel smoke</b>	Reg. 24 - 03
<b>Anti-theft / immobiliser</b>	Reg. 116 - 00
<b>Seat strength</b>	Reg. 17 - 08
<b>Seat belt anchorages</b>	Reg. 14 - 07
<b>Seat belts / restraints</b>	Reg. 16 - 06

SYSTEM	APPROVAL LEVEL
<b>Head restraints</b>	Reg. 25 - 04
<b>Towing hooks</b>	1005/2010
<b>Id of Controls</b>	Reg. 121 - 00
<b>Cab heating</b>	Reg. 122 - 00
<b>Speedo / reverse gear</b>	Reg. 39 - 00
<b>Plates (statutory)</b>	19/2011*249/2012
<b>Lighting</b>	Reg. 48 - 04
<b>Spray-suppression</b>	109/2011
<b>Safety glazing</b>	Reg. 43 - 00
<b>Tyres</b>	458/2011
<b>Speed limitation devices</b>	Reg. 89 - 00
<b>Front underrun protection</b>	Reg. 93 - 00
<b>Masses and dimensions</b>	1230/2012
<b>External projections of cabs</b>	Reg. 61 - 00
<b>Cab Strength</b>	Reg. 29 - 02
<b>Rear Underrun bar (Option)</b>	Reg. 58 - 02
<b>Coupling Provision (Option)</b>	Reg. 55 - 01



**ALSO AVAILABLE:**

CANTER 3.5T MANUAL / CANTER 3.5T DUONIC® / CANTER 7.5T DUONIC® / CANTER 7.5T MANUAL  
/ CANTER 8.55T DUONIC® / CANTER CREW CAB / CANTER ECO HYBRID

ISSUED BY MERCEDES-BENZ UK LTD,  
TONGWELL, MILTON KEYNES, MK15 8BA

**TELEPHONE: 0800 055 6050 (OR IF YOUR MOBILE PHONE PROVIDER CHARGES FOR FREEPHONE NUMBERS, 0333 222 0525)**  
**WWW.CANTER.CO.UK**

BODY-BUILDER INFORMATION AVAILABLE AT: [HTTP://BB-PORTAL.FUSO-TRUCKS.COM](http://bb-portal.fuso-trucks.com)

THE CONTENTS OF THIS BROCHURE ARE NOT BINDING AND THE RIGHT IS RESERVED TO MAKE MODIFICATIONS WITHOUT NOTICE.  
DUONIC® IS A REGISTERED TRADEMARK OF DAIMLER AG



Exclusively from Mercedes-Benz